

**2025/2026**  
2025/2026



**KF Service Solutions**

KF 2611111 20111111









E  
C  
O  
N  
O  
M  
Y







Our KF ECONOMY vehicle, built on the Mercedes-Benz Sprinter base, is a cost-effective solution for shorter regional travel. It is an excellent companion for public service tasks, employee transportation, or for bus operators running school bus services.



Its design is characterized by simplicity, yet it meets demanding expectations in terms of quality, comfort, and safety.





Simple



Economy



Clean





## Base specification

### Drive:

-  **RWD-AWD: All-wheel or rear-wheel drive**

### Transmission:

-  **6-speed manual E.Gear 480**

### Permitted total weight:

-  • **5000 kg**

### Steering version:

-  **Left-hand drive**

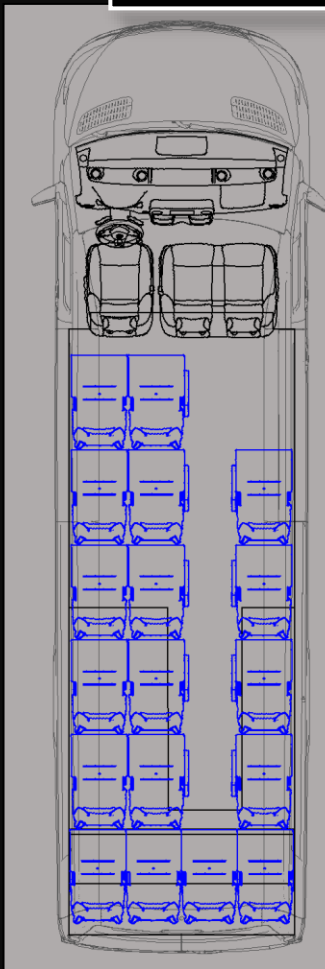
### Diesel engine: EU VI.

### Used models:

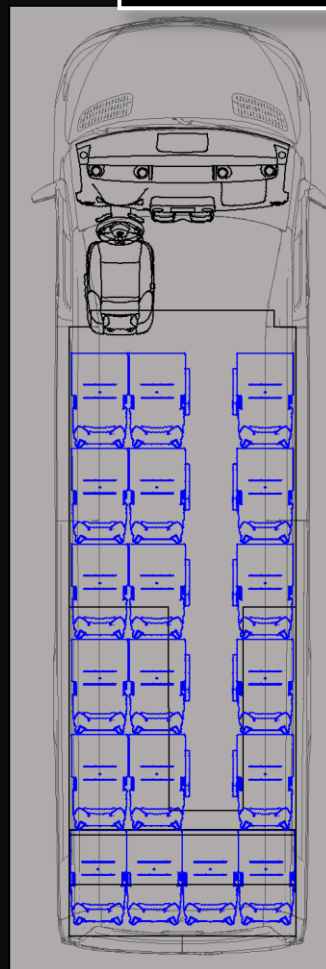
-  • **515/517/519\***

\* These data are for informational purposes only; for details, please contact our staff.

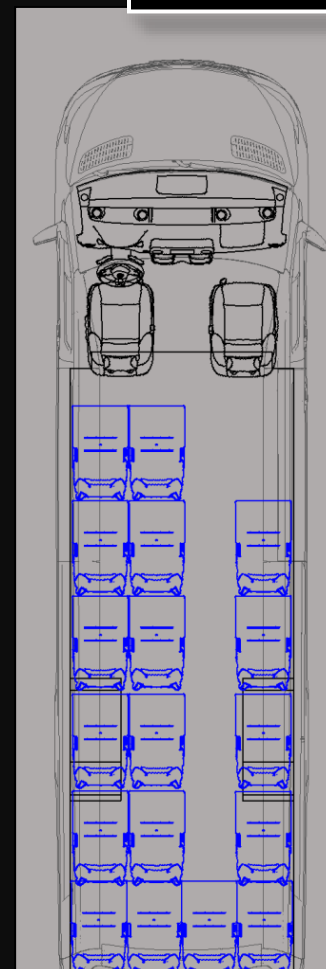
18+2+1



19+1



18+1+1

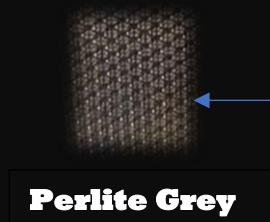
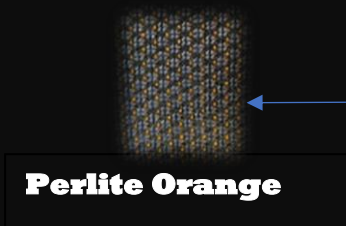


### Available Extras:

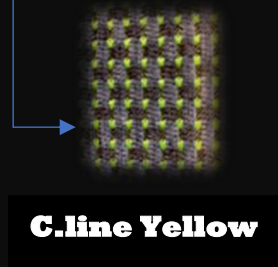
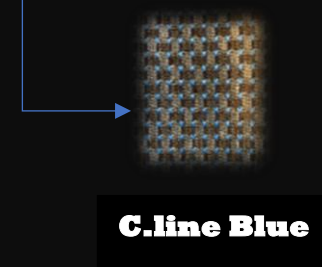
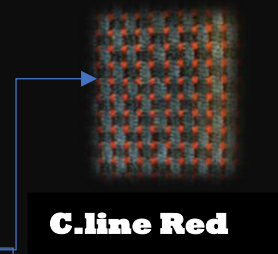
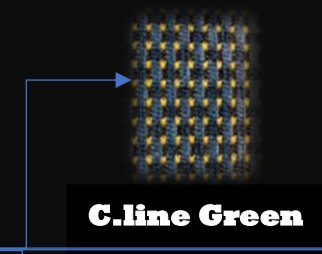
18+2+1, 18+1+1 or 19+1 seating arrangement / Automatic operation for front-door boarding with custom KF design / Economy KF seat extras: reclining backrest, adjustable armrest / Additional insulation in the passenger area / 17" LCD roof monitor / Heating with water-blown or radiator system / Microphone and wireless hands-free kit / Reversing radar / Seat heating for the driver and co-driver seats / Hat shelf (with LED lighting) and speaker / Windows surrounded by factory thermo-glass or custom KF design



## Basic fabric upholstery



## Optional Fabric upholstery

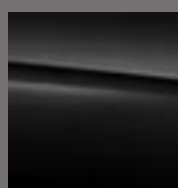


## Basic paint options

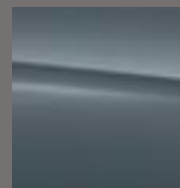
**Artic-White**



**Deep-Black**



**Blue-Grey**



**Jupiter Red**



**Steel-Blue**





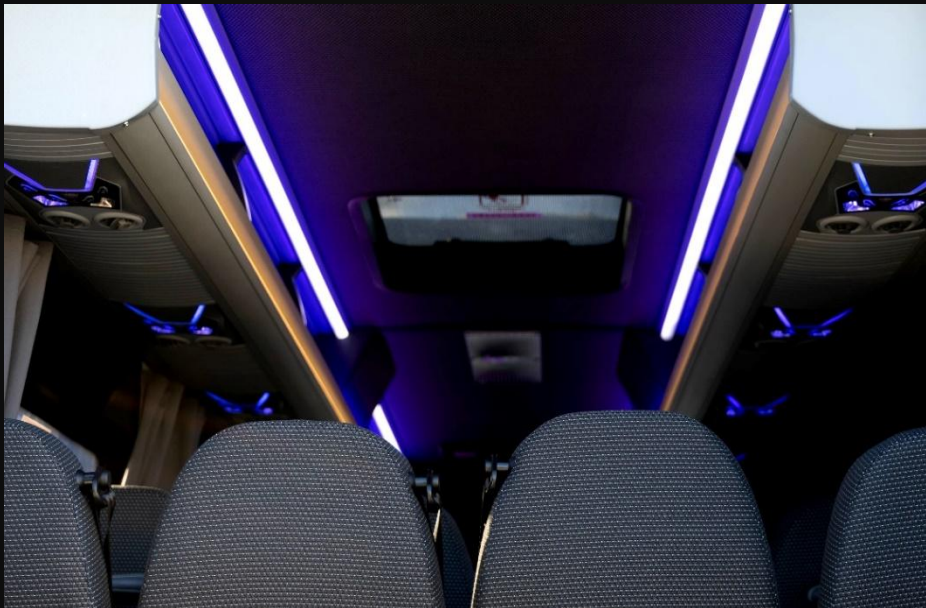
# TOURIST







The KF Tourist model provides all the necessary equipment and comfort of tourist category buses. It is optimized for long-distance travel and transfer services, featuring ample luggage space and high comfort and safety equipment.

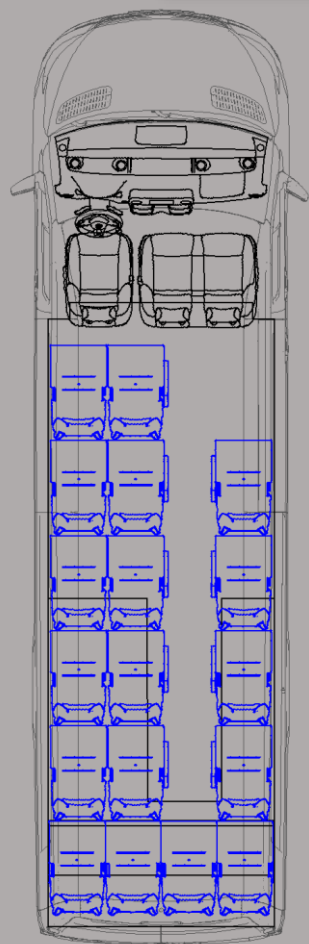


The travel experience is enhanced by individual air vents, USB connections, and reading lights at each seat. Additionally, it has an air-conditioned passenger area and an electrically controlled step to assist boarding. The large multimedia roof monitor also contributes to making the travel time enjoyable.

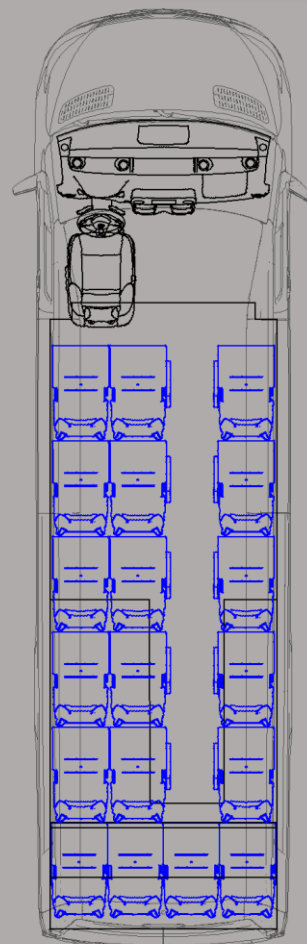




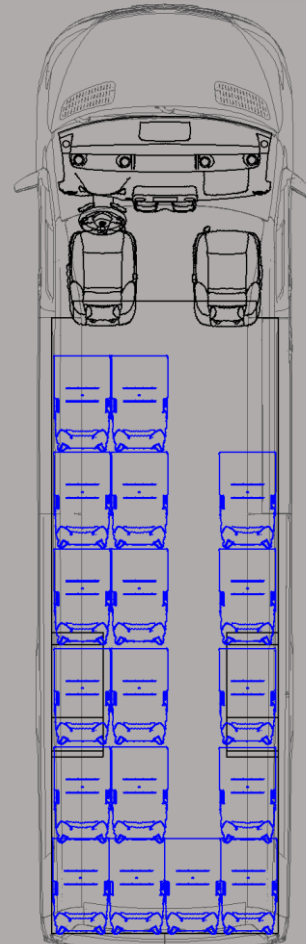
18+2+1



19+1



18+1+1



## Base specification

### Drive:

 **RWD-AWD: All-wheel or rear-wheel drive**

### Transmission:

 **6-speed manual  
E.Gear 480**

### Permitted total weight:

 **5000 kg**

### Steering version:

 **Left-hand drive**

### Diesel engine: EU VI.

### Used models:

 **515/517/519\***

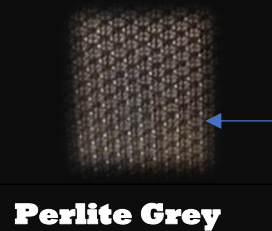
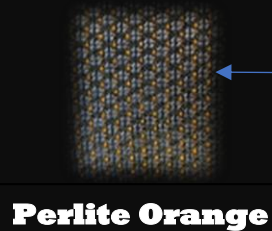
### Available Extras:

Automatic operation for front-door boarding with custom KF design / Electrically operated door with factory hinges (BCE) / Tourist KF seat extras: extendable, footrest, table, double stitching, half-leather, leather headrest with piping, reclining backrest, adjustable armrest / Additional insulation in the passenger area / 17" or 19" LCD roof monitor / Heating with water-blown or radiator system / Microphone and wireless hands-free kit / Reversing radar / Seat heating for the driver and co-driver seats / Hat shelf (with LED lighting) and speaker / Windows surrounded by factory thermo-glass or custom KF design / Wi-Fi / 50L fridge (for side-door version)

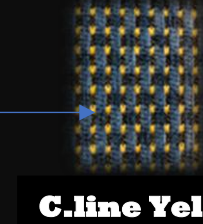
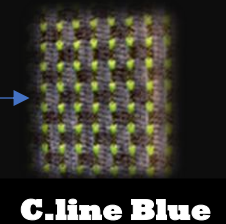
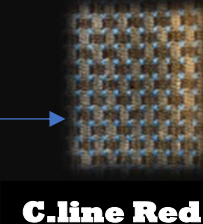
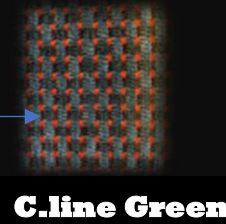
\* These data are for informational purposes only; for details, please contact our staff.



## Basic fabric upholstery



## Optional Fabric upholstery



## Basic paint options

Artic-White	Deep-Black	Blue-Gray	Jupiter-Red	Steel-Blue
Cavansite Blue	Tenorite-Grey	Obsidian - Black	Iridium-Silver	Selenite-Grey



B  
U  
S  
I  
N  
E  
S  
S







The KF Business version is suitable for long-distance, comfortable, and spacious premium travel needs. The panorama or fake-panorama tinted glass section, the 17" roof monitor with full multimedia and navigation options, as well as the half-leather passenger seats justifiably elevate the Business version to a higher category.



The premium appearance is enhanced by the exterior plastic elements matching the vehicle's colour. This high-class bus is primarily recommended for VIP passengers requiring business or luxury travel, and it can be ordered with up to 16 passenger seats.







## Base specification

### Drive:

- **RWD-AWD: All-wheel or rear-wheel drive**

### Transmission:

- **6-speed manual Automatic**

### Permitted total weight:

- **5000 kg**

### Steering version:

- **Left-hand drive**

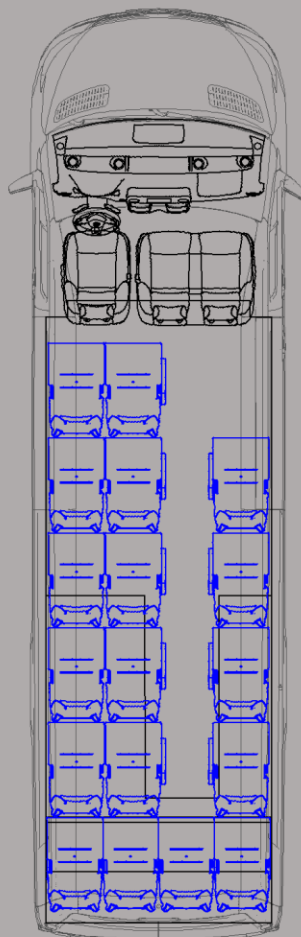
### Diesel engine: EU VI.

### Used models:

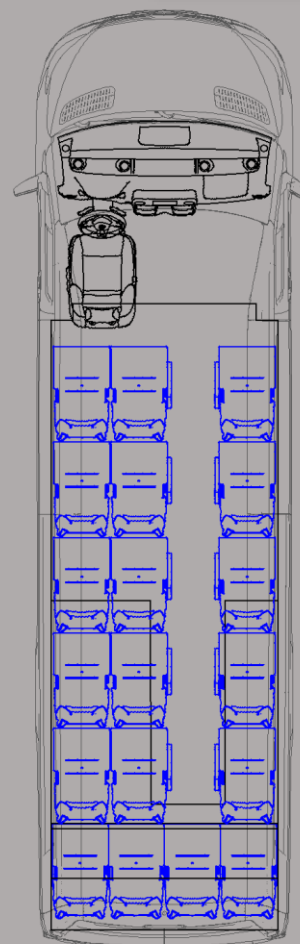
- **515/517/519\***
- **LCD monitor: 17"**
- **Wi-Fi**
- **Active brake assist**

\*These data are for informational purposes only; for details, please contact our staff.

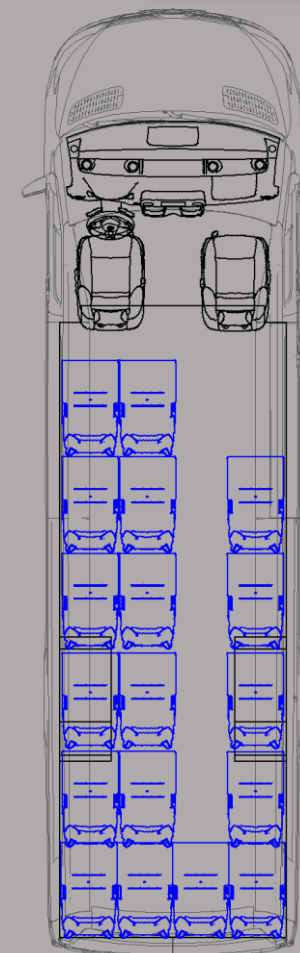
19+2+1



19+1



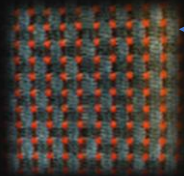
18+1+1



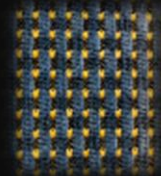
### Available Extras:

Automatic operation for front-door boarding with custom KF design / Electrically operated door with factory hinges (BCE) / Business+ KF seat extras: extendable, footrest, table, double stitching, full leather, leather headrest with piping, reclining backrest, adjustable armrest / Additional insulation in the passenger area / Body extension of 300 mm / Heating with water-blown or radiator system / Microphone and wireless hands-free kit / Reversing radar / Seat heating for the driver and co-driver seats / Hat shelf (with LED lighting) and speaker / Windows surrounded by factory thermo-glass or custom KF design / Wi-Fi / 50L fridge (for side-door version) / Mini kitchen with water heater, coffee maker, wine cooler / Foldable table and comfort footrest / Armchair seats with 8-10 seating capacity

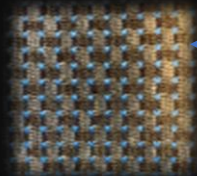
## Basic fabric upholstery



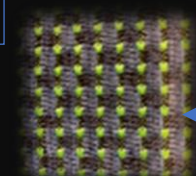
**C.line Red**



**C.line Orange**



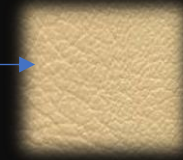
**C.line Blue**



**C.line Green**



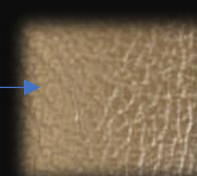
## Optional Fabric upholstery



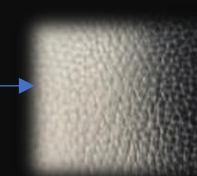
**Beige**



**Gray**



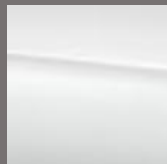
**Light Brown**



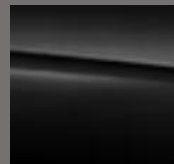
**Black**

## Basic paint options

**Artic-White**



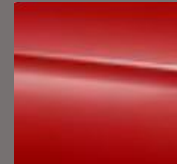
**Deep-Black**



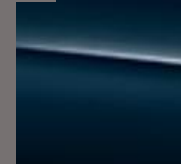
**Gray-Blue**



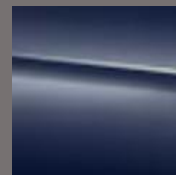
**Jupiter Red**



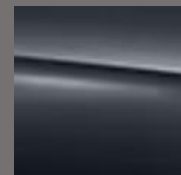
**Steel-Blue**



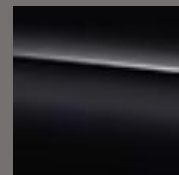
**Cavansite  
Blue**



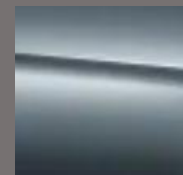
**Tenorite  
Gray**



**Obsidian  
Black**



**Iridium-  
Silver**



**Selenite-  
Grey**







**Family**



**Sport**



**Vip**

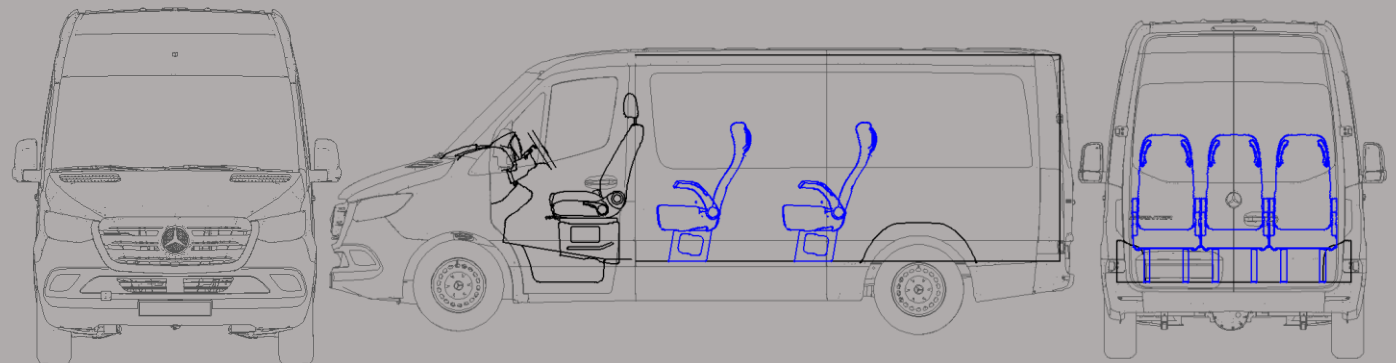


## EQUIPMENT

- **SPACIOUS INTERIOR:** Comfortable, ergonomic seats that ensure maximum comfort even on long journeys.
- **AIR CONDITIONING SYSTEM:** The modern climate control system provides optimal temperature in any weather conditions.
- **ENTERTAINMENT SYSTEM:** Built-in multimedia units capable of playing movies and music, making the journey more entertaining and enjoyable.
- **LARGE LUGGAGE COMPARTMENT:** Provides enough space for suitcases and other bags, allowing every passenger to travel comfortably.
- **SAFETY EQUIPMENT:** Modern safety features such as ABS, ESP, and seat belts on every seat.
- **USB AND ELECTRICAL OUTLETS:** Each seat has the option to charge phones and other devices.

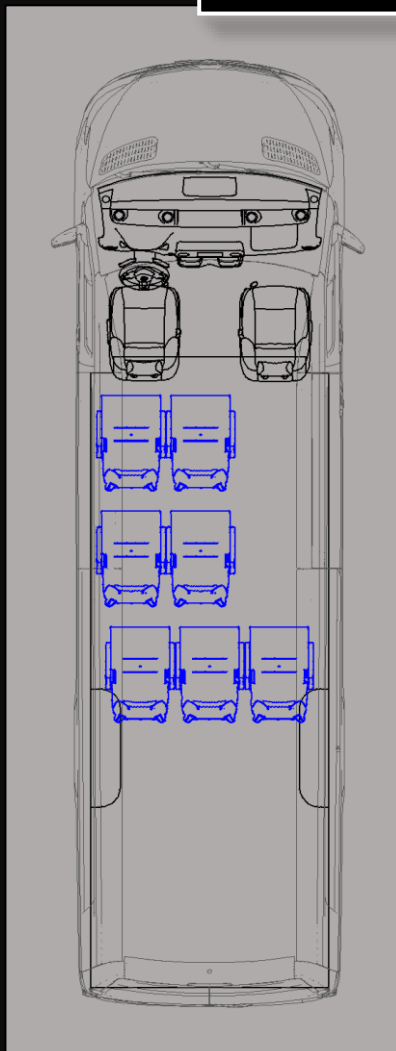


The KF Family bus is the perfect choice for both family outings and longer journeys. The design of the bus focuses on comfort and practicality, ensuring that passengers enjoy the best travel experience possible. The KF Family bus is an ideal solution for those seeking reliability, comfort, and modern technologies in a vehicle. It offers a comfortable ride, maximum safety, and a stylish appearance—all in one.

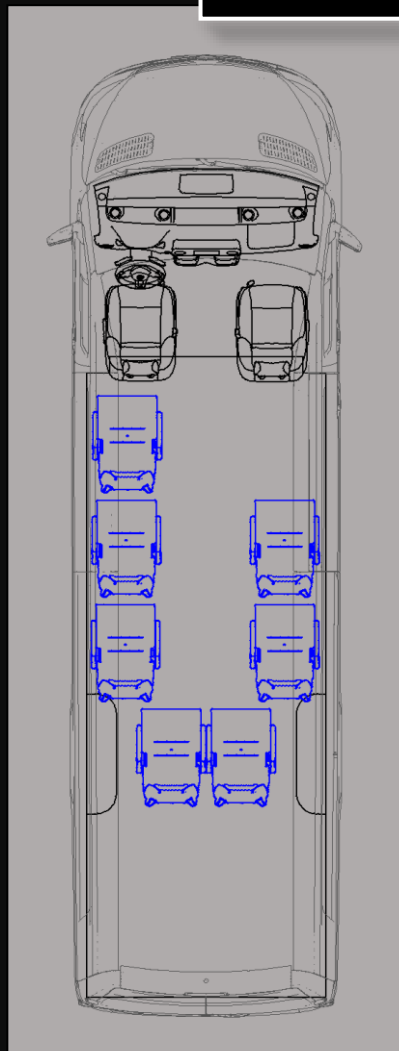




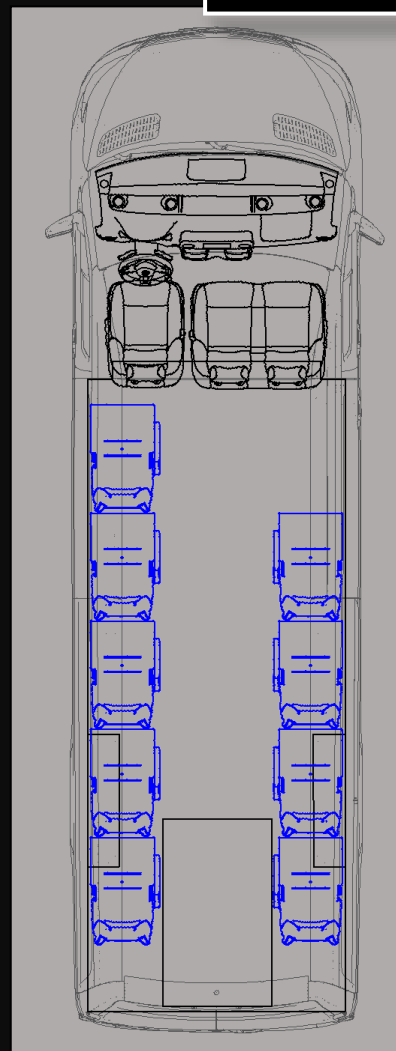
7+1+1



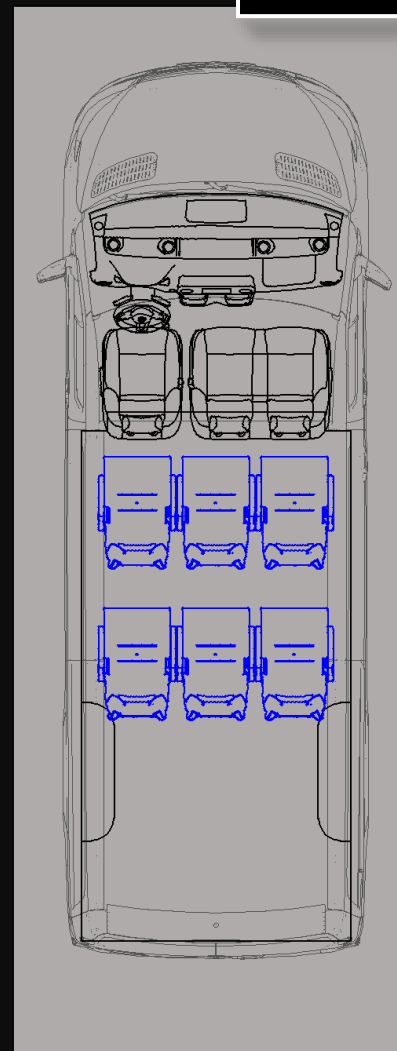
7+1+1



9+2+1


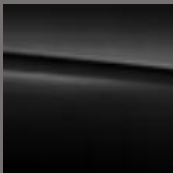





6+2+1





## Basic paint options

Artic-White	Deep-Black	Gray-Blue	Jupiter Red	Steel-Blue
				

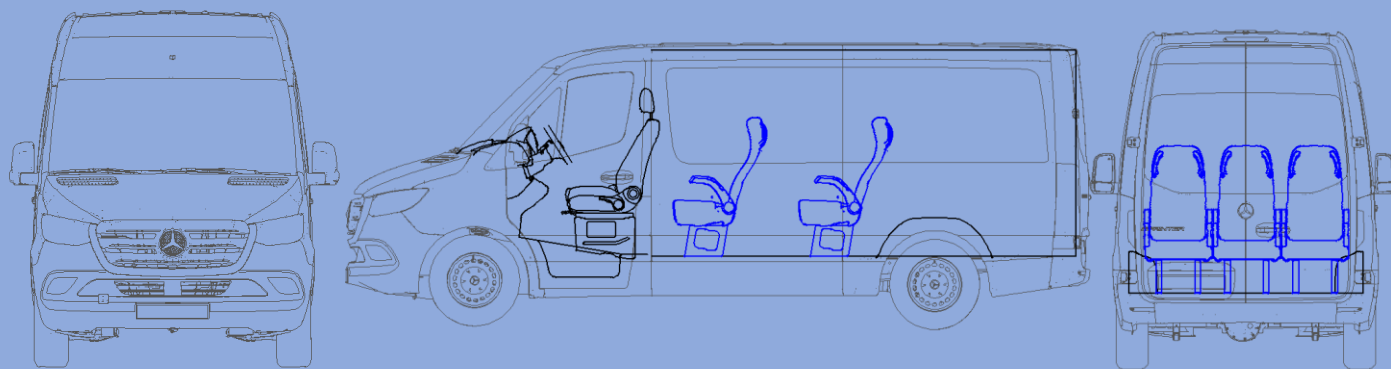


The **KF Sport** bus is designed for those seeking a vehicle that not only offers comfort but also has a dynamic appearance. The sporty style and advanced technological solutions of the bus make every trip enjoyable, whether it's for short journeys or longer excursions. The **KF Sport** bus not only provides comfort and safety but also exudes style and technological sophistication with its outstanding appearance and practical solutions. It is an ideal choice for both business purposes and active lifestyle families.

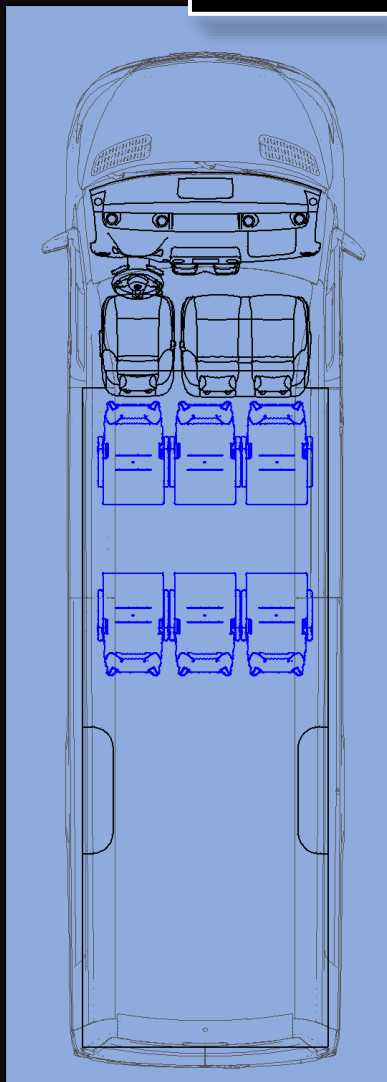


#### EQUIPMENT

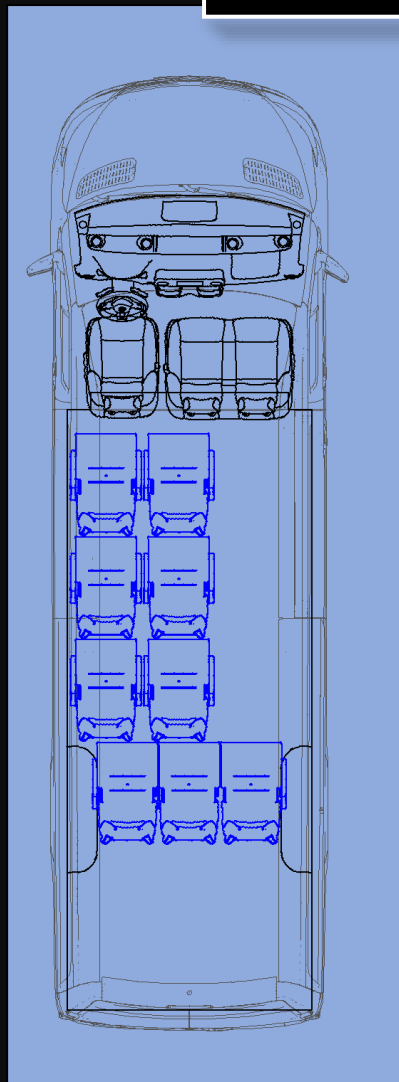
- **BASIC SIZE, STITCHED, RECLINABLE SEATS:** The seats in the bus are not only comfortable but also aesthetically outstanding. The uniquely coloured, leather-covered double-armrest seats provide a premium feel.
- **HEATING-COOLING VENTILATION SYSTEM:** The efficient air conditioning and heating system ensures that passengers can travel comfortably in every season.
- **SPORTY EXTERIOR APPEARANCE:** The elegant bumper paint and added spoiler give the bus a dynamic, modern look, making it stand out from the crowd.
- **ELECTRIC DOOR:** The convenient electric door allows for easy and quick boarding and alighting, which is particularly beneficial in busy locations or time-sensitive situations.
- **WIFI:** Passengers can enjoy continuous internet access while on the road, allowing them to stay online at all times.
- **ELECTRIC STEP:** The electric step provides easy access for all passengers, especially beneficial for the elderly or those with limited mobility.



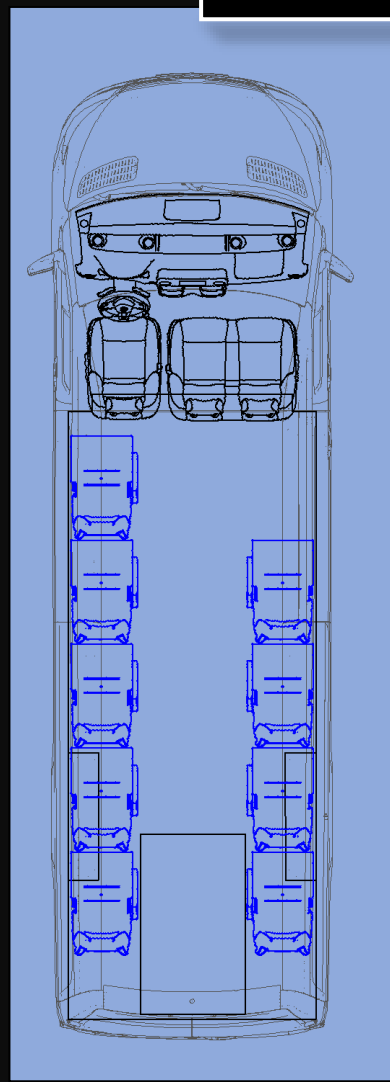
6+2+1



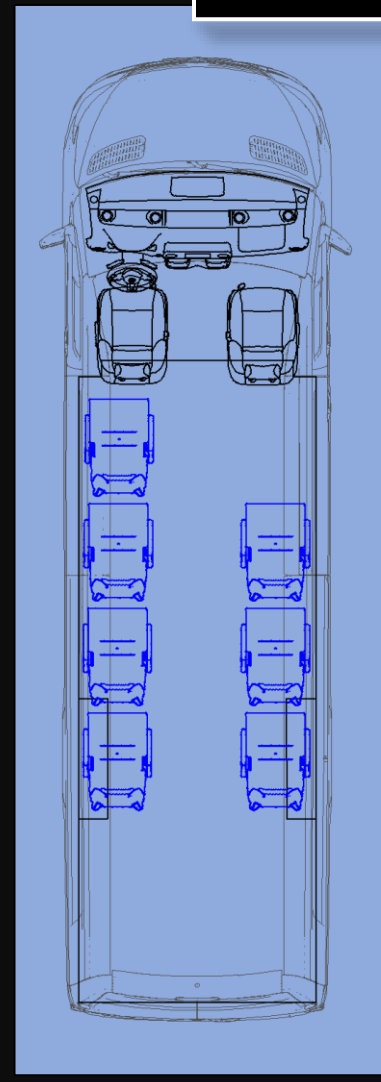
9+2+1



9+2+1



7+1+1







## Upholstery and Paint for Sport Model

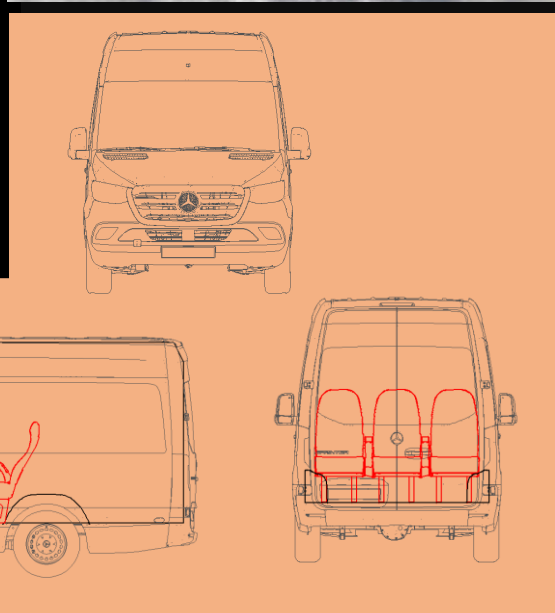


### Basic paint options

Artic-White	Deep-Black	Blue-Grey	Jupiter Red	Steel-Blue

The KF VIP bus is designed for those seeking an exclusive travel experience. Its luxurious features, elegant appearance, and modern technologies ensure that every journey is of premium quality. It is an ideal choice for business trips, special occasions, and private transfers.

The KF VIP bus is the perfect choice for those looking for exclusive comfort, style, and premium services for their travels. Every detail of luxury is ensured so that passengers can always travel at the highest level.





## EQUIPMENT

- **WIDEST RECLINABLE SEATS:** THE LEATHER-COVERED SEATS WITH DOUBLE ARMRESTS AND/OR ARMRESTS PROVIDE EXTRA COMFORT. THE SEATS ARE RECLINABLE AND EQUIPPED WITH FOOTRESTS, ENSURING MAXIMUM COMFORT EVEN ON LONGER JOURNEYS..
- **PREMIUM INTERIOR UPHOLSTERY:** THE LEATHER-COVERED LUXURY INTERIOR IS ELEGANT AND COMFORTABLE, PROVIDING THE HIGHEST STANDARD OF TRAVEL.
- **HEATING-COOLING VENTILATION SYSTEM:** THE MODERN AIR CONDITIONING AND HEATING SYSTEM ENSURES OPTIMAL TEMPERATURE IN THE PASSENGER AREA IN ALL WEATHER CONDITIONS.
- **ELEGANT EXTERIOR APPEARANCE:** THE REPLACED BUMPERS AND STYLISH ALLOY WHEELS ENHANCE THE BUS'S ELEGANCE.
- **ELECTRIC DOOR WITH REMOTE CONTROL:** THE CONVENIENT ELECTRIC DOOR CAN BE OPERATED BY REMOTE CONTROL, FACILITATING PASSENGER BOARDING AND ALIGHTING.
- **MULTIMEDIA SYSTEM:** WITH ONBOARD MULTIMEDIA DEVICES, PASSENGERS CAN WATCH MOVIES OR LISTEN TO MUSIC, GUARANTEEING AN ENTERTAINING JOURNEY.
- **WiFi:** A STABLE INTERNET CONNECTION ENSURES THAT PASSENGERS CAN STAY CONNECTED WHILE ON THE ROAD.
- **ELECTRIC STEP:** THE ELECTRICALLY OPERATED STEP PROVIDES EASY AND COMFORTABLE ACCESS.
- **PREMIUM EQUIPMENT:** A REFRIGERATOR, WINE COOLER, WATER HEATER, COFFEE MAKER, AND CARPET ENSURE THAT ALL LUXURY NEEDS ARE MET.
- **TINTED THERMO GLASS:** THE TINTED WINDOWS NOT ONLY PROVIDE AN ELEGANT APPEARANCE BUT ALSO PROTECT AGAINST HEAT FROM THE SUN.





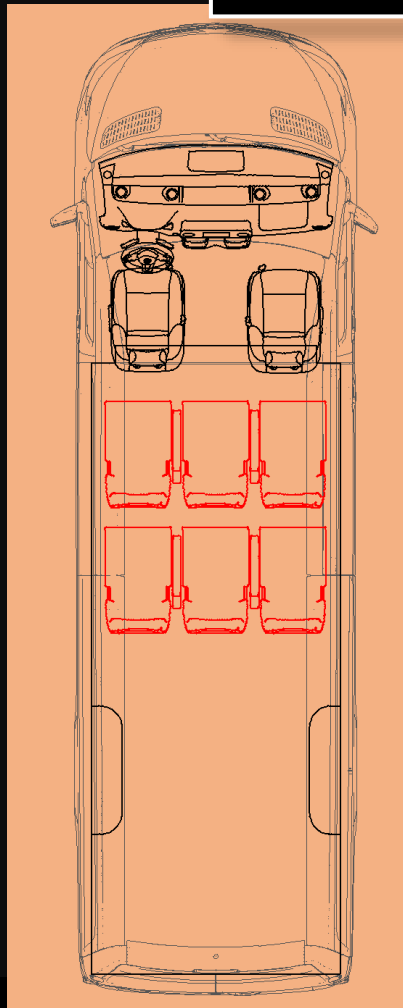
### Basic paint options

Artic-White	Deep-Black	Blue-Gray	Jupiter-Red	Steel-Blue
				

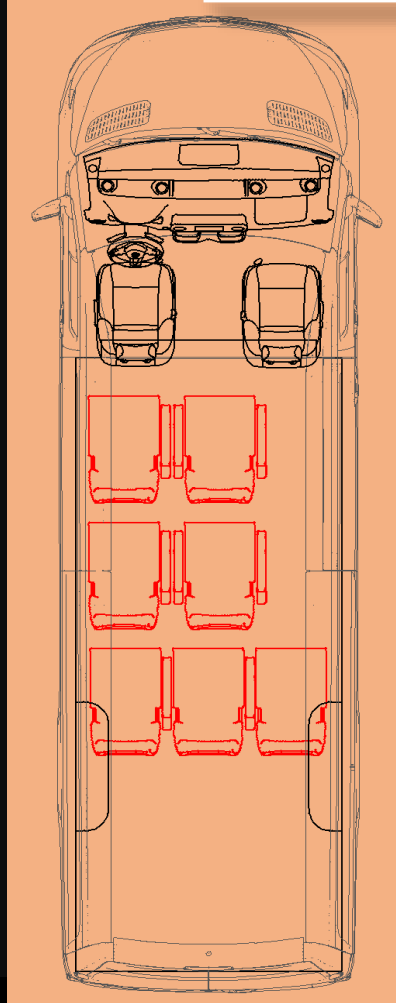




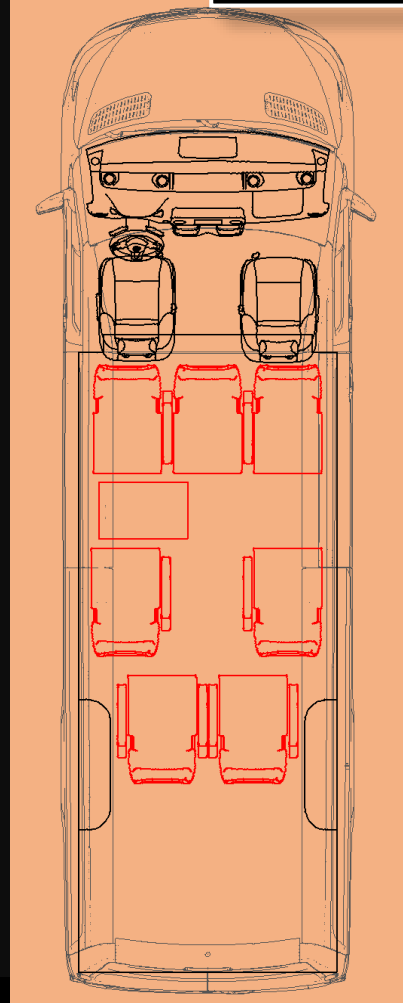
6+1+1



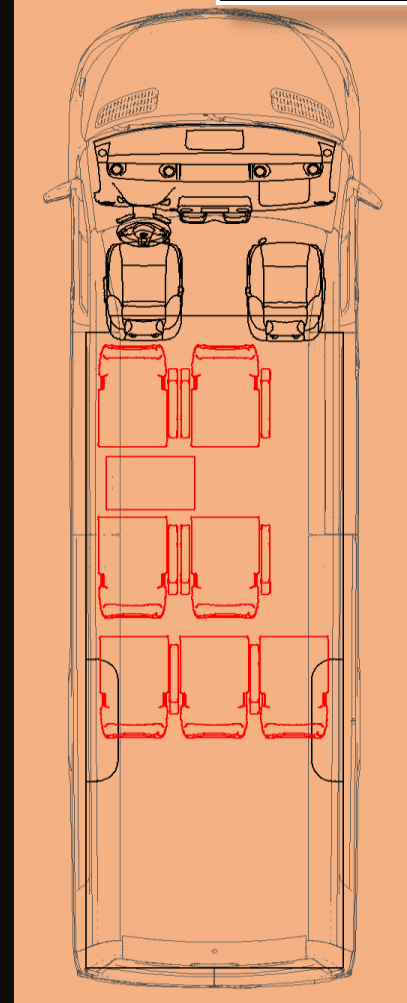
7+1+1



7+1+1



7+1+1





#### Contact:

Headquarters: 2440 Százhalombatta, Benta Major 2982/8

Factory site: 2310 Szigetszentmiklós,

ÁTI-Sziget Ipari Park

Tel: +36 20 475 0703

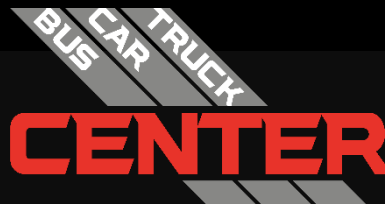
Email: [info@kfminibus.hu](mailto:info@kfminibus.hu)

[www.kfminibus.hu](http://www.kfminibus.hu)



Scan me!

#### Our Partners



## What's the next step?

### - Dive in!

Just get started! Familiarize yourself with all the specifications and configure your vehicle according to your needs using our online configurator.



### - Come and Try it Out!

Visit our premises and see our vehicles in person. Test out the different features to ensure you find the perfect fit for you...



### - Select!

Based on detailed specifications, you can choose your vehicle tailored to meet your expectations fully.



### -Contact Us!

Reach out to our experts, who will assist you in making the best decision possible.

